

ONDA®

Pelopornya Kualitas



KATALOG

JARINGAN BERSIH

KATEGORI : JARINGAN & INSTALASI SAMBUNGAN RUMAH

DAFTAR ISI

SERTIFIKAT 02

ONDA[®]
Pelopornya Kualitas

WATER METER 03

AKSESORIS 07

KRAN TEMBOK 09

LOCKABLE MAGNETIC 11

LOCKABLE SPRING 13

PLUMBING 15

DCOTA[®]
KRAN AIR | VALVE

AKSESORIS 17

Perruno[®]
VALVE

AKSESORIS 19

SERTIFIKAT SNI, TKDN, ISO, SEALTAPE



SERTIFIKAT SNI



SERTIFIKAT TKDN

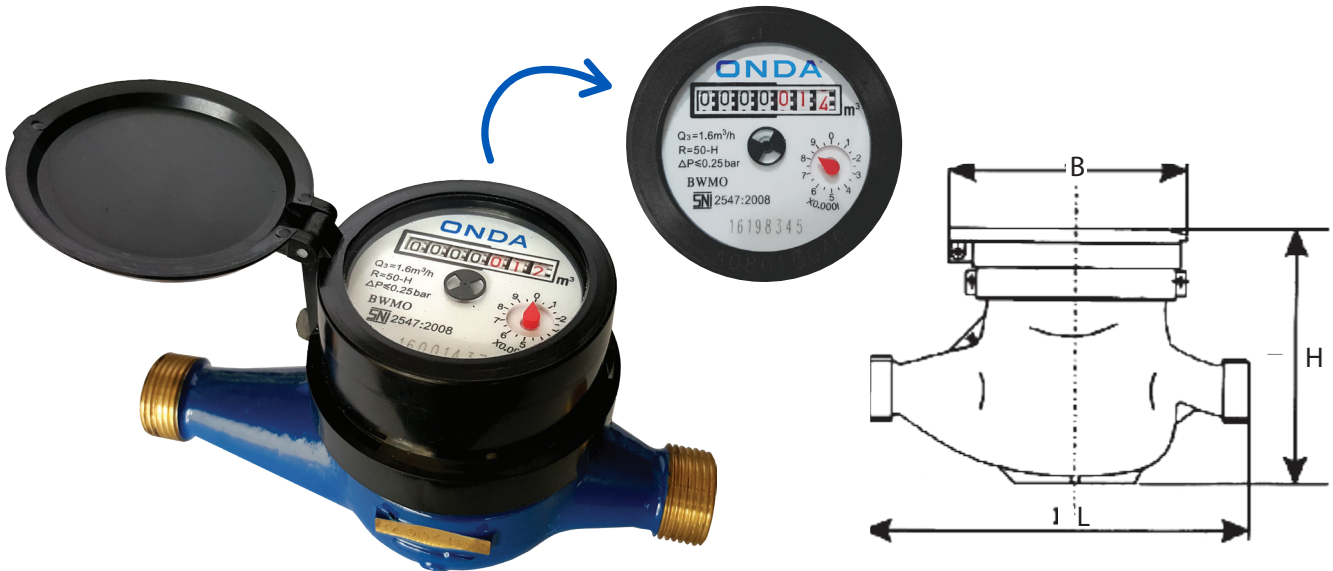


SERTIFIKAT ISO 9001:2015



SERTIFIKAT SEAL TAPE

WATER METER BRASS 1/2"



**METERAN
KERING**



**ANTI
MAGNET**



**MENGHITUNG
ARUS
BOLAK-BALIK**



**SERTIFIKAT
TKDN**

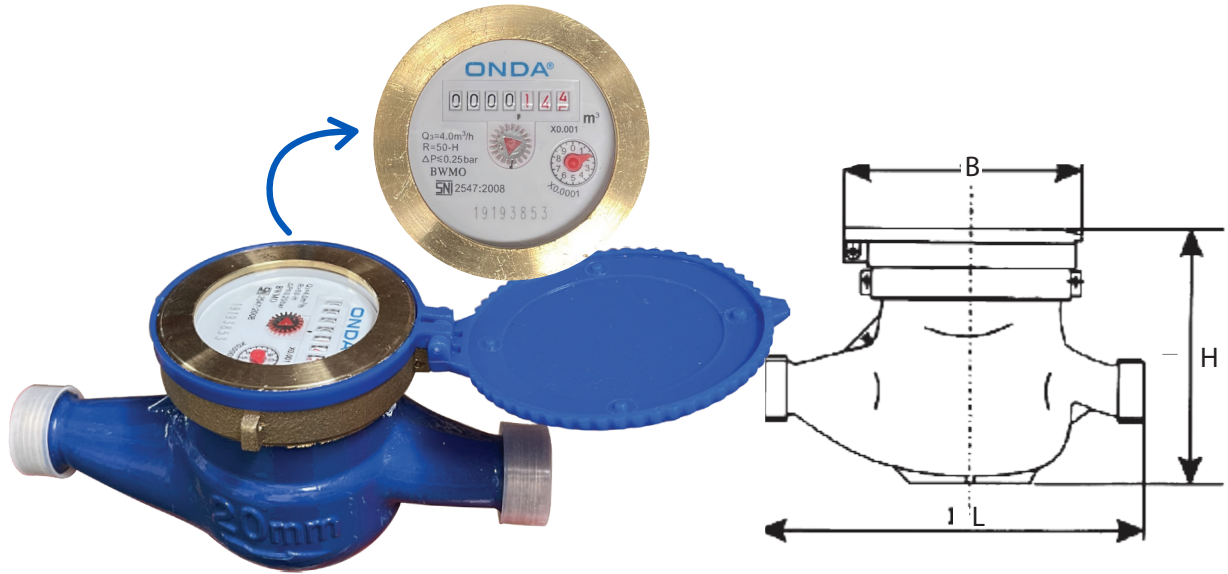


**SERTIFIKAT
SNI**

Nominal Diameter DN/mm	Nominal Pressure PN/Bar	Smallest Readable Vol. 1	Registration Capacity m3	Operation Temperature Max oC	Installation Position			Maximal Flow Rate Qmax	Nominal Flow Rate Qn m3/h
					Pipe	Meter	Head		
15	10	0,001	9999	50				3	1,6

Nominal Diameter DN/mm	Transitional Flow Rate Qt m3/h	Minimum Flow Rate Qmin	Error Limits		Dimension in mm		
			Qmax..Qt %	Qmin %	L	B	H
15	0,12	0,03	<±32	<±35	165	76	100

WATER METER BRASS 3/4" & 1"



**METERAN
KERING**



**ANTI
MAGNET**



**MENGHITUNG
ARUS
BOLAK-BALIK**



**SERTIFIKAT
TKDN**

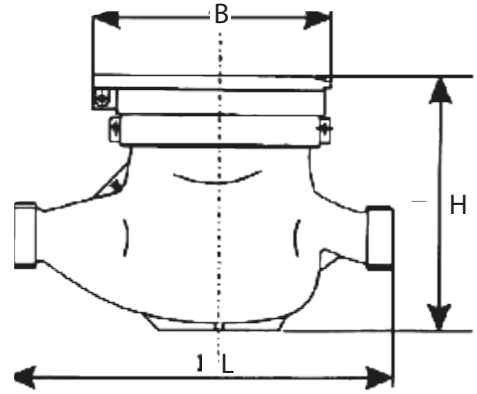


**SERTIFIKAT
SNI**

Nominal Diameter DN/mm	Nominal Pressure PN/Bar	Smallest Readable Vol. 1	Registration Capacity m3	Operation Temperature Max oC	Installation Position			Maximal Flow Rate Qmax	Nominal Flow Rate Qn m3/h
					Pipe	Meter	Head		
20	10	0,001	9999	50				5	2.5
25	10	0,001	9999	50				7	4.0

Nominal Diameter DN/mm	Transitional Flow Rate Qt m3/h	Minimum Flow Rate Qmin	Error Limits		Dimension in mm		
			Qmax..Qt %	Qmin %	L	B	H
20	0,2	0,05	<±32	<±35	195	100	110
25	0,28	0,07	<±32	<±35	225	102	112

WATER METER NANO 1/2"



**METERAN
KERING**



**ANTI
MAGNET**



**MENGHITUNG
ARUS
BOLAK-BALIK**



**SERTIFIKAT
TKDN**

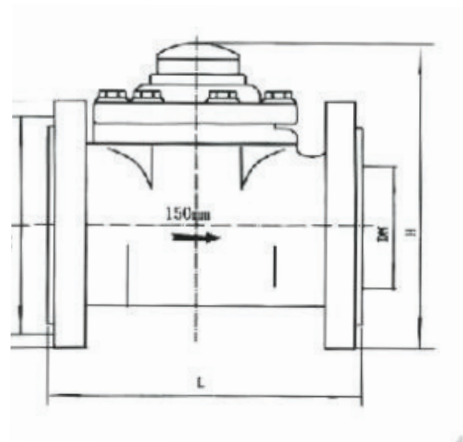


**SERTIFIKAT
SNI**

Nominal Diameter DN/mm	Nominal Pressure PN/Bar	Smallest Readable Vol. 1	Registration Capacity m3	Operation Temperature Max oC	Installation Position			Maximal Flow Rate Qmax	Nominal Flow Rate Qn m3/h
					Pipe	Meter	Head		
15	10	0,001	9999	50				3	1,6

Nominal Diameter DN/mm	Transitional Flow Rate Qt m3/h	Minimum Flow Rate Qmin	Error Limits		Dimension in mm		
			Qmax..Qt %	Qmin %	L	B	H
15	0,12	0,03	<±32	<±35	165	76	100

WATER METER FLANGE



*Max water pressure 10 Bar
 *Standard flange PN 10
 *Water temperature :
 - Cold water 40°C
 - Hot water 90°C



**METERAN
KERING**



TAHAN LAMA



BERKUALITAS



**HARGA
KOMPETITIF**

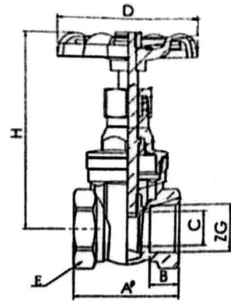
MAIN MECHANICAL DATA

Dia Size DN (mm)	Class	Qs Overload Flow	Q3	Qs Transitional Flow	Q1	Starting Flow L/h	Min Reading	Max Reading
			m ³ /h					
50	B	20	16	1.28	0.32	150	0.01	9999999
65	B	50	25	5	0.5	170	0.01	9999999
80	B	80	40	8	0.8	280	0.01	9999999
100	B	120	63	12	1.26	400	0.01	9999999
125	B	200	100	20	2	800	0.01	9999999
150	B	300	160	30	3.2	1200	0.01	9999999
200	B	500	250	50	5	1500	0.01	9999999
250	B	800	400	80	8	2500	0.01	9999999
300	B	1200	630	120	12.6	6000	0.01	9999999

DIMENSION & WEIGHT

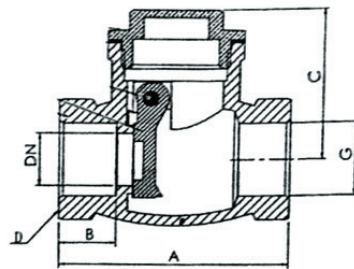
Dia Size DN (mm)	Length L	Width B mm	Height H	Connecting Flange			Weight Kg
				D mm	Bolt circle dia mm	Connecting bolt dia pcs	
50	200	175	257	165	125	4 x 16mm	12
65	200	185	267	185	145	4 x 16mm	13
80	225	200	277	200	160	8 x 16mm	15
100	250	220	287	220	180	8 x 16mm	19
125	250	245	297	245	210	8 x 16mm	22
150	300	285	375	285	240	8 x 20mm	47
200	350	345	400	340	295	8 x 20mm	48
250	450	395	484	395	350	12 x 20mm	110
300	450	445	506	445	400	12 x 20mm	115

GATE VALVE



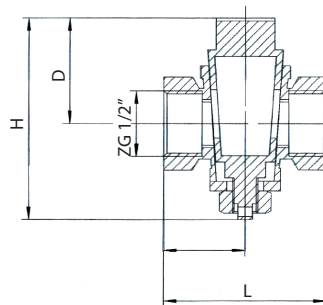
Size	A	B	C	D	E	H
1/2"	40.5	11.2	13.5	52	27.5	76
3/4"	47.5	13.5	19	56	33.5	86
1"	53	14	25	62	40	98
1-1/4"	60	16	30	69	49	115
1-1/2"	62.5	16.5	37	78	56	132
2"	73	18	48	85	68	148
2-1/2"	84	21	55	173	85.5	175
3"	93	22	65	113	99	195
4"	107	26	78	145	123	225

CHECK VALVE



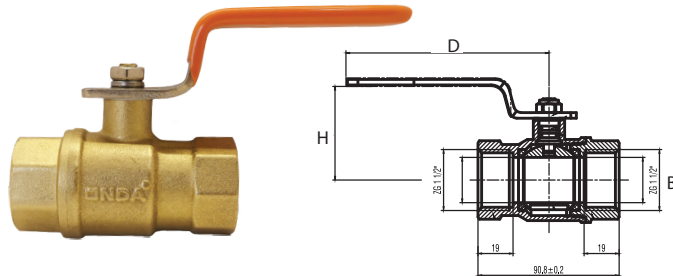
Size	A	B	C	D	DN
1/2"	58	14.5	40	27.5	13.5
3/4"	69	20	49	35	18
1"	80	18	55	41.5	25
1-1/4"	92	20	65	50	29
1-1/2"	100	21	70	58.5	34
2"	120	24	80	69.5	46
2-1/2"	143	28	90	86	56
3"	158	31	100	99	66
4"	189	37	112	124	83

PLUG KRAN STD



Size	L	H	D
1/2"	51	63	33
3/4"	56.5	84.5	40.5

BALL VALVE



Size	DN	D	H	L	B
1/4"	10	83.5	45	48	10
3/8"	10	83.5	45	48	10
1/2"	15	98.5	48	62.3	14.5
3/4"	20	98.5	51	67.7	19
1"	25	125	60	76.6	24.5
1-1/4"	32	125	65	83.9	31
1-1/2"	40	125	71.5	97.5	39
2"	50	148	83	111.3	49
2 1/2"	65	201	92.5	141.4	62
3"	80	201	101	154.4	73
4"	100	241	118.5	184	89

SEAL TAPE (ST 01)



Maximum Traction Mpa	Maximum Water Pressure Bar	Maximum Heat Celcius
9	20	260,-5



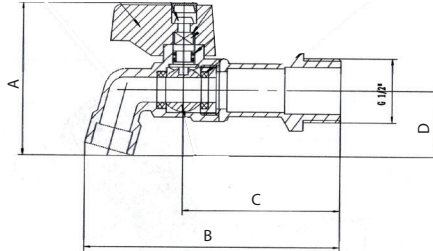
Sejak tahun 2012, kualitas produk ONDA telah terbukti sehingga memperoleh berbagai penghargaan bergengsi yaitu **Top Brand Award**. Salah satu produk unggulan ONDA adalah **Seal Tape** yang memiliki keunggulan antara lain tidak mudah putus, panjang pas 10 meter dan anti bocor.

Specification		Standard Code	Standard Scope	Testing Method
Width	12 mm	QB/T-4008-2010	+0.5 mm, -0.5 mm	Average Width of 10 Rolls
Thickness	0.075 mm	QB/T-4008-2010	+0.015 mm, -0.015 mm	Average Thickness of 10 Overlap Rolls (by the thickness-testing instrument)
Length	10 m	QB/T-4008-2010	Not Less Than 10M	Average Length of 10 Rolls
Density	0.3 g/cm ³	QB/T-4008-2010	+15%, -15%	Average Density of 10 Rolls
Net Weight	2.7 g/rolls	QB/T-4008-2010	Not Less Than 2.7g	Average Net Weight of 10 Rolls

BC



Size	A	B	C	D
1/2"	53	82	50.5	21
3/4"	53	87.5	55.5	21

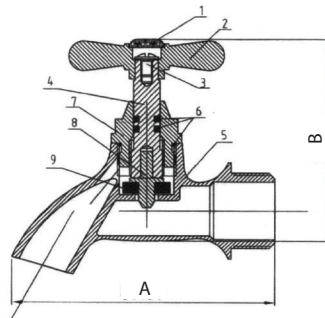


No	Part	Material	Qty
1	Body	BRASS	1
2	Screw Cap	BRASS	1
3	Handle	AL	1
4	Ball	BRASS	1
5	Valve Spindle	BRASS	1
6	Gasket Ring	PTFE	2
7	O-ring	NBR	2
8	Screw	IRON	1
9	Red Cover	ABS	1

BK



Size	A	B
1/2"	80	63.62
3/4"	89.89	68.08

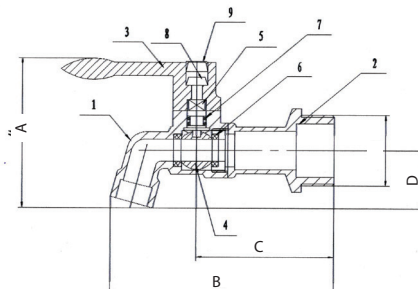


No	Part	Material	Qty
1	Body	H63-3	1
2	Gasket	EPDM	1
3	Cartridge	H63-3	1
4	Stem	H63-3	1
5	Sealing Ring	PTFE	1
6	Cap	H63-3	1
7	Packing	PTFE	1
8	Pressure Nut	H63-3	1
9	Handle	H63-3	1
10	Screw	H63	1

BL

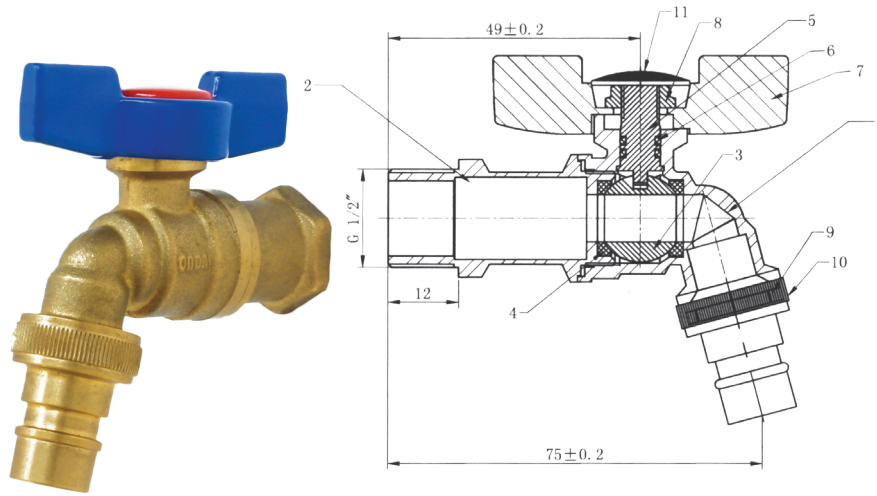


Size	A	B	C	D
1/2"	54	82	50.5	21
3/4"	54	87.5	55.5	21



No	Part	Material	Qty
1	Body	Zinc Alloy	1
2	Screw Cap	Zinc Alloy	1
3	Handle	Duriumin	1
4	Ball	HPb59-1	1
5	Valve Spindle	HPb59-1	1
6	Gasket Ring	PTFE	2
7	O-Ring	NBR	2
8	Screw	Iron	1
9	Blue Cover	ABS	1

NBC 1/2"

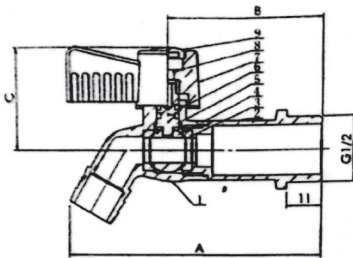


No	Part	Material	Qty
1	Body	Brass	1
2	Pipe	Brass	1
3	Ball	Steel	1
4	Gasket	PTFE	2
5	Stem	Steel	1
6	O-Ring	NBR	2
7	Handle	Aluminium	1
8	Cap	Steel	1
9	Gasket	NBR	1
10	Outlet	Brass	1
11	Cover	Plastic	1

KUBC 1/2"



Size	A	B	C
1/2"	80	49	33

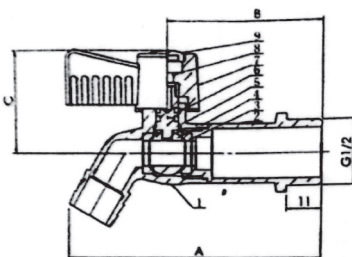


No	Part	Material	Qty
1	Body	Copper Chromeplated	1
2	Cover	Copper Chromeplated	1
3	Ball	Copper Chromeplated	1
4	PTFE	Polytetrafluoroethylene	1
5	O-Ring	NBR	2
6	Stem	Brass	1
7	Handle	AL	1
8	Nut	FE	1
9	Pressvre Bead	Plastic	1

KUBM 1/2"



Size	A	B	C
1/2"	60	28	33



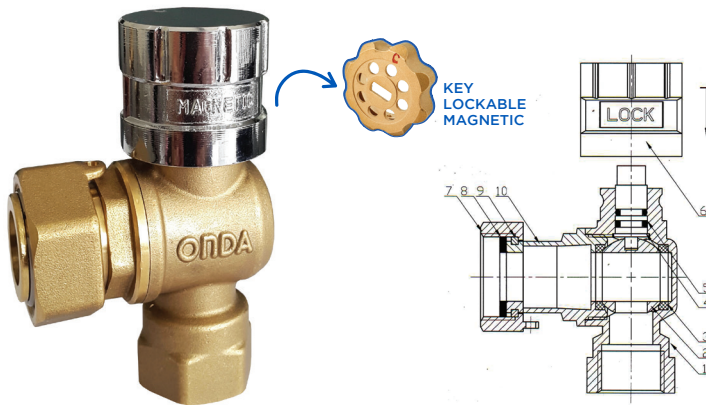
No	Part	Material	Qty
1	Body	Copper Chromeplated	1
2	Cover	Copper Chromeplated	1
3	Ball	Copper Chromeplated	1
4	PTFE	Polytetrafluoroethylene	1
5	O-Ring	NBR	2
6	Stem	Brass	1
7	Handle	AL	1
8	Nut	FE	1
9	Pressvre Bead	Plastic	1

BALL VALVE MAGNETIC 1/2"



No	Part	Material	Qty
1	Body	HPb57-3	1
2	Sealing Seat	PTFE	2
3	Ball	HPb57-3	1
4	Bonnet	HPb57-3	1
5	O-Ring	NBR	2
6	Stem	HPb57-3	1

ALGP MAGNETIC 1/2" x 3/4"

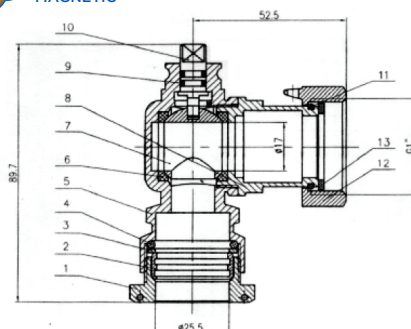


No	Part	Material
1	Body	Brass
2	Ball	Brass
3	Seal Ring	PTFE
4	Valve Stem	Brass
5	O-Ring	EPDM
6	Handle	XINC
7	Hexa Nuts	Brass
8	Gasket	EPDM
9	Ferrule	Stainless Steel
10	Bonnet	Brass

ALPE MAGNETIC

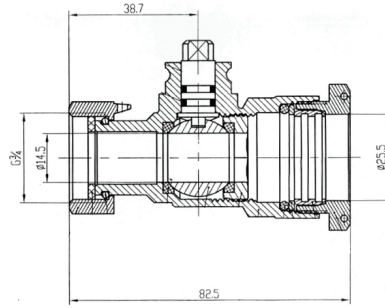


Size
20 mm x 3/4"
25 mm x 3/4"
25 mm x 1"



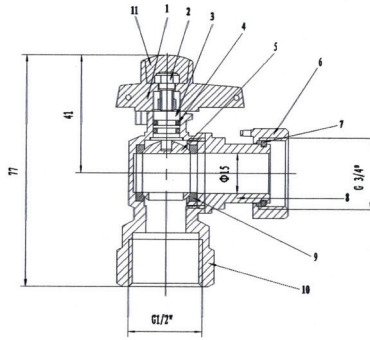
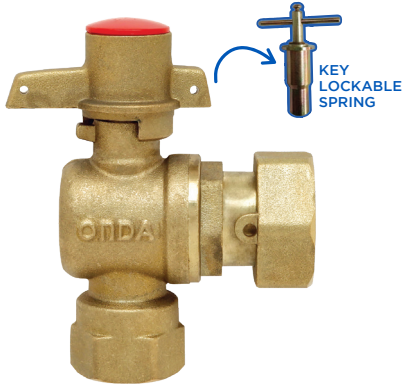
No	Part	Material	Qty
1	Nut	HPb57-3	1
2	Compression Ring	H62	1
3	Washer	HPb57-3	1
4	O-Ring	NBR	1
5	Body	HPb57-3	1
6	Ball Seat	PTFE	2
7	3-Way Ball	HPb57-3	1
8	Bonnet	HPb57-3	1
9	O-Ring	NBR	2
10	Stem	HPb57-3	1
11	Snap Ring	SS	1
12	Hexagonal Nut	HPb57-3	1
13	Rubber Washer	NBR	1

LPE MAGNETIC



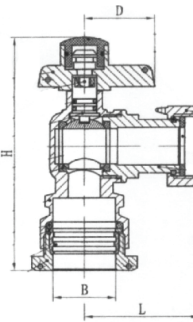
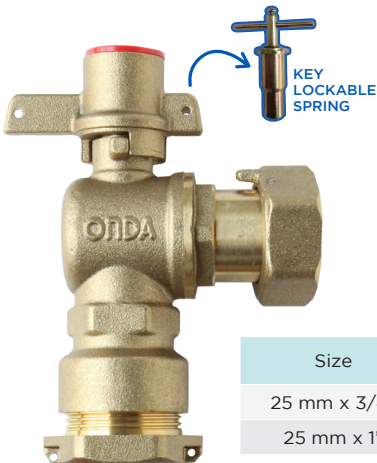
Size	DN	D	H	L	B
25 mm x 3/4"	25	28.5	41.5	81.5	26.5
32 mm x 1-1/4"	32	44	46.5	122.5	32.5

ALGP (QF 20) 1/2" x 3/4"



No	Part	Material
1	Handle	Brass
2	Union Nut	Brass
3	Stem	Brass
4	O-Ring	Rubber
5	Ball	Brass
6	Locking Screw	Brass
7	Snap Ring	Stainless Steel
8	Coupling Nipple	Brass
9	Nall Seats	PTFE
10	Body	Brass
11	Cap	PTFE

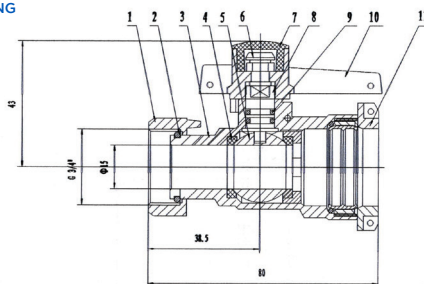
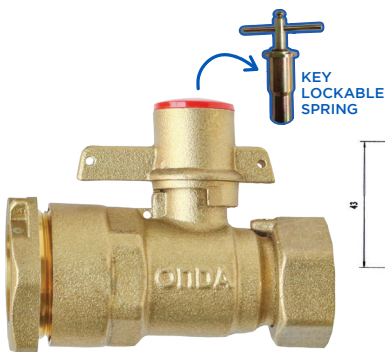
ALPE



Size	DN	D	H	L	B
25 mm x 3/4"	20	28.5	97	47	20.5
25 mm x 1"	25	28.5	97	47	25.5

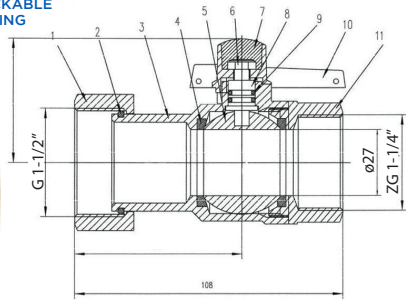
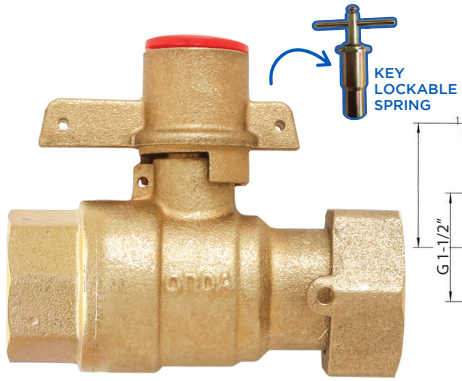
No	Part	Material
1	Handle	Brass
2	Union Nut	Brass
3	Stem	Brass
4	O-Ring	Rubber
5	Ball	Brass
6	Locking Screw	Brass
7	Snap Ring	Stainless Steel
8	Coupling Nipple	Brass
9	Ball Seats	PTFE
10	Body	Brass
11	O-Ring	Rubber
12	Washer	Brass
13	Compression Ring	Brass
14	Nut	Brass
15	Cap	PTFE

LPE 25 mm x 3/4"



No	Part	Material	Qty
1	Connected Screw	HPb59-1	1
2	Snap Ring	10r18NI9T	1
3	Body	HPb59-1	1
4	Gasket Ring	PTFE	2
5	Ball	HPb59-1	1
6	Screw	HPb59-1	1
7	Red Cover	ABS	1
8	Valve Spindle	HPb59-1	1
9	O-Ring	Rubber	2
10	Handle	HPb59-1	1
11	Valve Cap	HPb59-1	1

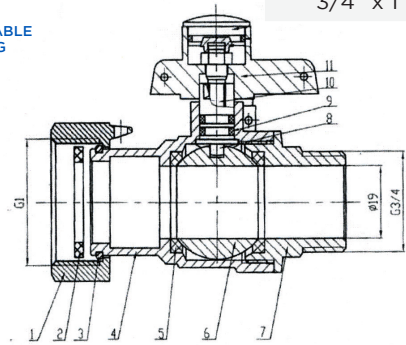
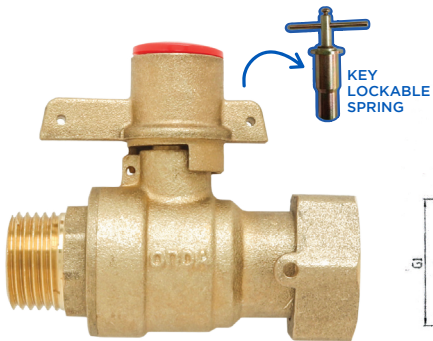
LGPF (QF 23)



Size
1" x 1-1/4"
1-1/2" x 2"
1-1/4" x 1-1/2"

No	Part	Material	Qty
1	Connected Screw	HPb59-1	1
2	Snap Ring	10r18NI97	1
3	Body	HPb59-1	1
4	Gasket Ring	PTFE	2
5	Ball	HPb59-1	1
6	Screw	HPb59-1	1
7	Red Cover	ABS	1
8	Valve Spindle	HPb59-1	1
9	O-Ring	Rubber	2
10	Handle	HPb59-1	1
11	Valve Cap	HPb59-1	1

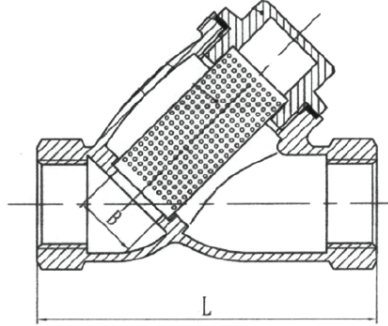
LGPM (QF 21)



Size
1/2" x 3/4"
3/4" x 3/4"
3/4" x 1"

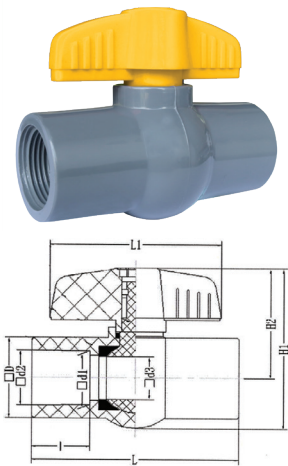
No	Part	Material	Qty
1	Connected Screw	HPb59-1	1
2	Snap Ring	10r18NI97	1
3	Body	HPb59-1	1
4	Gasket Ring	PTFE	2
5	Ball	HPb59-1	1
6	Screw	HPb59-1	1
7	Red Cover	ABS	1
8	Valve Spindle	HPb59-1	1
9	O-Ring	Rubber	2
10	Handle	HPb59-1	1
11	Valve Cap	HPb59-1	1

Y-STRAINER



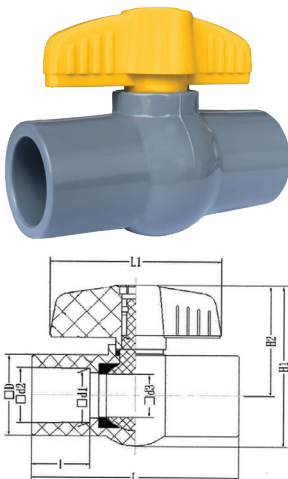
Size	DN	L	B
1/2"	15	78.5	15
3/4"	20	99	20
1"	25	114	25
1-1/4"	32	134	32
1-1/2"	40	160	40
2"	50	195	50
2-1/2"	65	229	63
3"	80	265	73
4"	100	265	89

PVAG (DRAT)



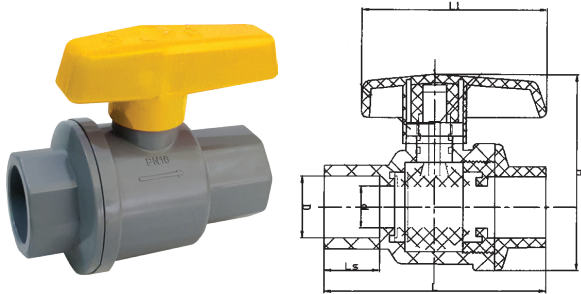
Size	d1	d2	d3	D	L	L1	I	H1	H2
1/2"	21.23	21.54	15	30.7	80	70	22.5	62	46.5
3/4"	26.57	26.87	20	36.5	92	77	27	78	52
1"	33.27	33.65	24	44.5	98	101	28	93	65
1-1/4"	42.04	42.42	30	53.5	113	110	28.5	98	72.5
1-1/2"	48.11	48.56	34	62	131	110	34	115	73.5
2"	60.17	60.63	45	72	149	141	40	153	89
2-1/2"	72.85	73.38	60	92	204	178	44	160	105
3"	88.7	89.31	77	106	229	224	51	190	124
4"	114.07	114.76	101	135	300	276	61	233	148

PVBG (POLOS)



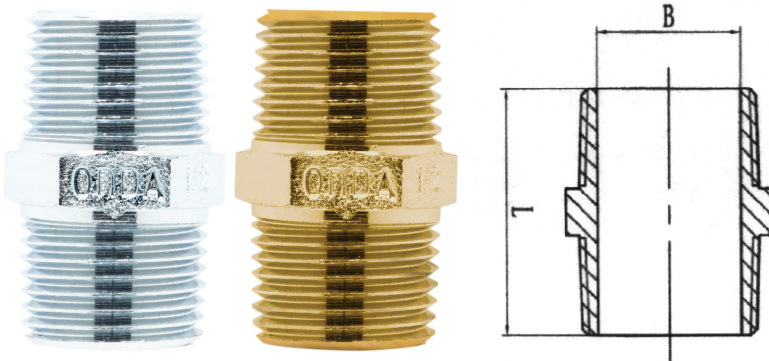
Size	d1	d2	d3	D	L	L1	I	H1	H2
1/2"	21.23	21.54	15	30.7	80	70	22.5	62	46.5
3/4"	26.57	26.87	20	36.5	92	77	27	78	52
1"	33.27	33.65	24	44.5	98	101	28	93	65
1-1/4"	42.04	42.42	30	53.5	113	110	28.5	98	72.5
1-1/2"	48.11	48.56	34	62	131	110	34	115	73.5
2"	60.17	60.63	45	72	149	141	40	153	89
2-1/2"	72.85	73.38	60	92	204	178	44	160	105
3"	88.7	89.31	77	106	229	224	51	190	124
4"	114.07	114.76	101	135	300	276	61	233	148

PVCBV



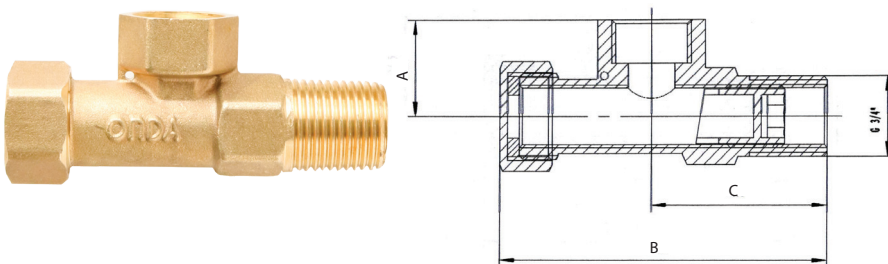
Size	D	d	Ls	L	L1	H
1/2"	22.3	15	20	77	67	70
3/4"	26.4	20	24	88	78	80
1"	32.3	25	29	107	86	91
1-1/4"	42.4	32	33	120	93	105
1-1/2"	48.5	40	40	141	142	119
2"	60.5	50	40	153	142	133

DOUBLE NIPPLE CHROME & BRASS



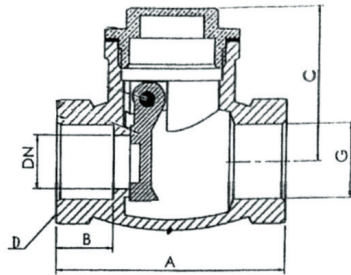
Size	DN	L	B
1/4"	10	27	8
3/8"	10	28	10
1/2"	15	36.5	15
3/4"	20	40	20.4
1"	25	44.4	26.4
1-1/4"	32	50	35
1-1/2"	40	50	40.5
2"	50	53	52

FERRULE CUTTER



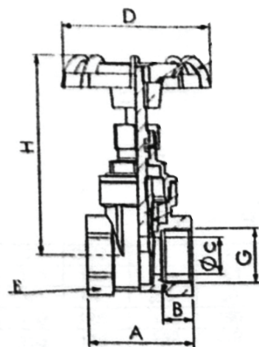
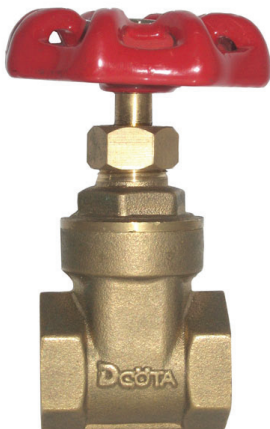
Size	DN	L	B
1/2"	24.5	84	45
3/4"	27.5	85	45.5

CHECK VALVE



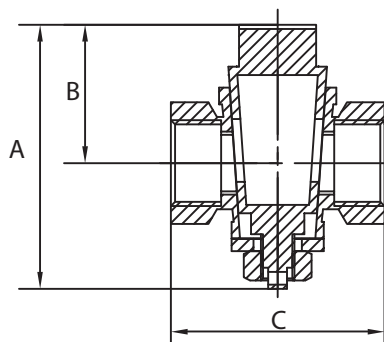
Size	A	B	C	D	DN
1/2"	49	13	35	27	12
3/4"	59	14	38	32	14
1"	69	13	43	39	21
1-1/4"	79	17	53	47	28
1-1/2"	90	20	58	55	34
2"	104	22	72	68	42

GATE VALVE



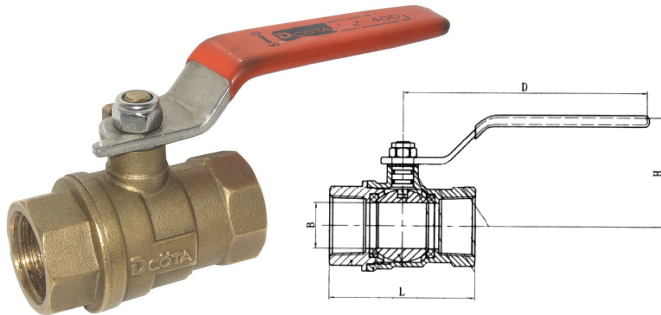
Size	H	D	C	B	A	E
1/2"	65	55	13	10.5	38	25
3/4"	74	55	19	11.5	42	29.5
1"	85	60	23	11.5	46	37
1-1/4"	98	70	31	12	48	46.5
1-1/2"	110	70	35	13.5	55	52
2"	128	80	45	14	58	65
2-1/2"	170	110	60	15	64	82
3"	180	110	68	14	73	93
4"	225	125	90	18	79	120.5

PLUG KRAN



Size	A	B	C
1/2"	62	31	50
3/4"	65	31.5	51.5

BALL VALVE



Size	D	H	L	B	DN
1/2"	79.5	41	53.4	14.5	15
3/4"	79.5	44	60.6	19	20
1"	127	57	73.8	24.5	25
1-1/4"	127	64	82.6	31	32
1-1/2"	148	71.5	91.6	39	40
2"	148	83	107	49	50

SEAL TAPE

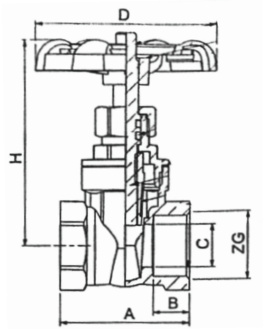
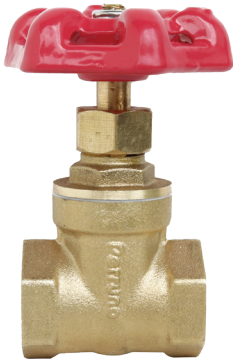


Maximum Traction	Maximum Water Pressure	Maximum Heat
Mpa	Bar	Celcius
6	20	260,-5



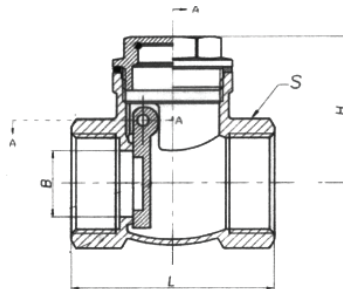
Aksesoris pada Dcota hadir sebagai pelengkap kebutuhan Sanitary dan Plumbing di Indonesia.

GATE VALVE



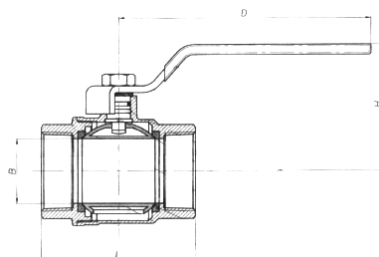
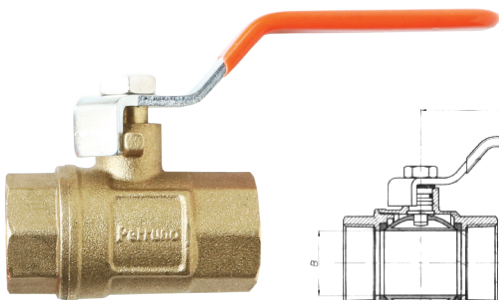
Size	H	D	C	B	A
1/2"	61	53	13	11	39
3/4"	74	56	15	12	42
1"	82	62	19	14	49
1-1/4"	100	69	25	16	59
1-1/2"	115	78	30	17	61
2"	135	78	40	18	66
3"	195	113	66	23	88
4"	195	113	78	26	104

CHECK VALVE



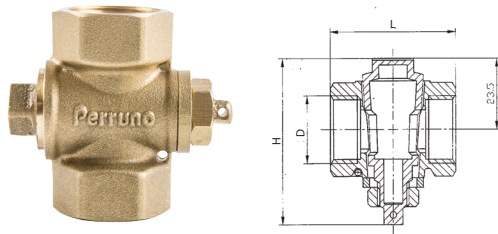
Size	H	L	B	S
1/2"	33.5	46.2	12.5	24.5
3/4"	38.5	51.5	17.5	29.5
1"	45	62	22	37
1-1/4"	50.5	66	29	47
1-1/2"	55.3	73.2	31.5	53
2"	61	85	40	64

BALL VALVE



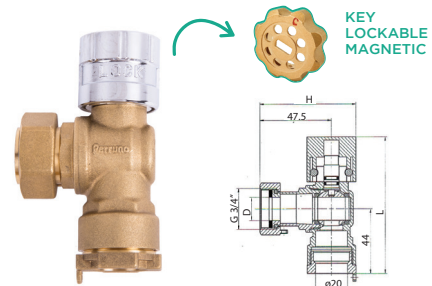
Size	DN	D	H	L	B
1/2"	15	81	41	52.5	14.5
3/4"	20	81	44	60.5	19.5
1"	25	112	56	74.5	24.5
1-1/4"	32	130	59	83	31
1-1/2"	40	150.5	77	92	39
2"	50	150.5	84.5	107.5	49

PLUG KRAN



Size	L	H	D
1/2"	47	52	15

ALPE MAGNETIC



Size	L	H	D
1/2"	90	63.5	15

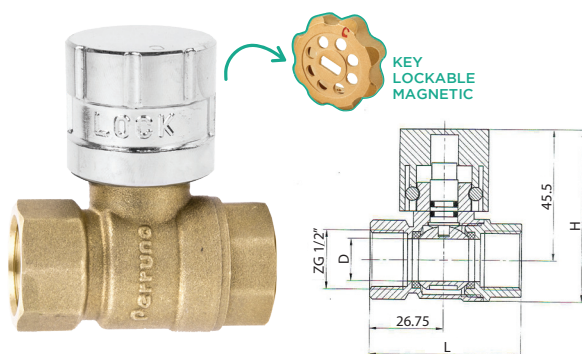
SEAL TAPE



Maximum Traction Mpa	Maximum Water Pressure Bar	Maximum Heat Celcius
9	20	260,-5

Specification	Standard Code	Standard Scope	Testing Method	
Width	12 mm	QB/T-4008-2010	+0.5 mm, -0.5 mm	Average Width of 10 Rolls
Thickness	0.070 mm		+0.2 mm, -0.2 mm	Average Thickness of 10 Overlap Rolls (by the thickness-testing instrument)
Length	10 m	QB/T-4008-2010	Not Less Than 10M	Average Length of 10 Rolls
Density	0.2 g/cm ³	QB/T-4008-2010	+15%, -15%	Average Density of 10 Rolls
Net Weight	168 g/rolls	QB/T-4008-2010	Not Less Than 1.68g	Average Net Weight of 10 Rolls

BALL VALVE MAGNETIC



Size	L	H	D
1/2"	53.5	60	15

No	Part	Material
1	Bonnet	Brass
2	Seal Ring	PTEF
3	Ball	Brass
4	Body	Brass
5	Handle	Zinc
6	O-Ring	EPDM
7	Stem	Brass

SPESIFIKASI TEKNIS SAMBUNGAN RUMAH



BC ONDA
1/2" | 3/4"

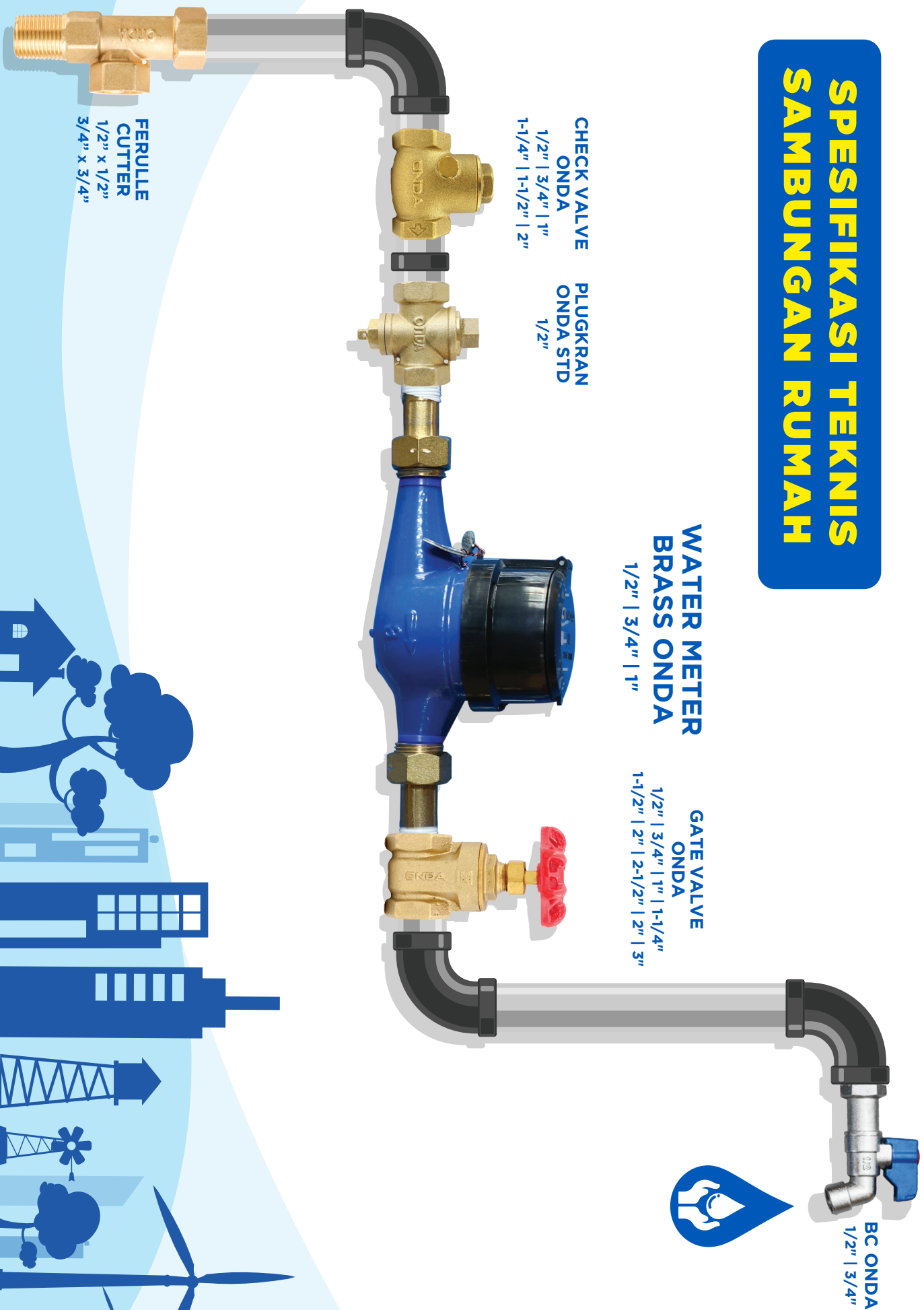
WATER METER
BRASS ONDA
1/2" | 3/4" | 1"

GATE VALVE
ONDA
1/2" | 3/4" | 1" | 1-1/4"
1-1/2" | 2" | 2-1/2" | 2" | 3"

CHECK VALVE
ONDA
1/2" | 3/4" | 1"
1-1/4" | 1-1/2" | 2"

PLUGKRAN
ONDA STD
1/2"

FERULLE
CUTTER
1/2" X 1/2"
3/4" X 3/4"





Di Distribusikan Oleh :
PT. Pipa Mikayla Cemerlang.
WhatsApp : 0821-2549-3876
Telp : (021) 22848247
Email : infopipamikaylacemerlang@gmail.com
office@ptpipamikaylacemerlang.com